



Our product series **FT** offers the best features and flexibility for your individual needs, including customized development of digital signage products and other devices.

Our technology is compatible with actual network technology and future connectivity standards.

This is the guarantee for entire compatibility on your individual infrastructure

## WHY CHOOSE US

### **OEM/ODM**

We are professional manufacturer for digital signage and LCD video wall with over 10 years of production experience.

### **REPLY**

Our pre-sales and after-sales support team offers 24hrs online service to help customers achieve great success.

### **QUALITY**

100% product quality protection.

### **PROTECTION**

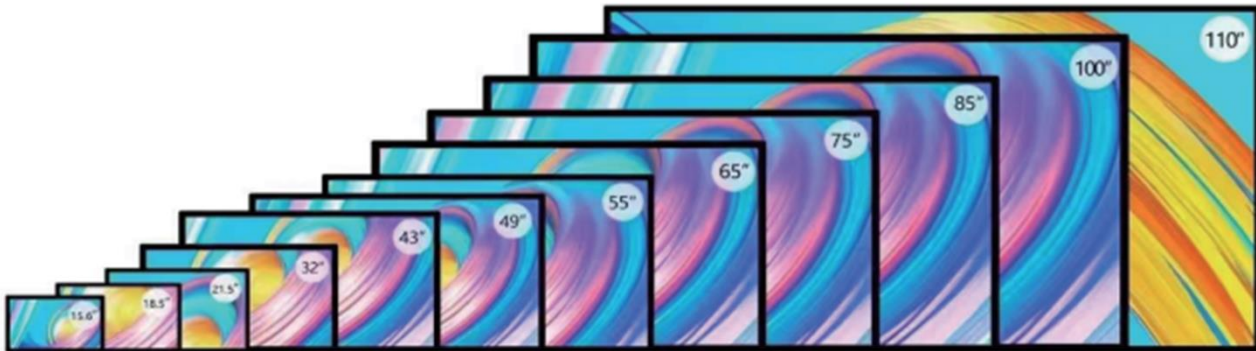
100% on-time shipment protection.

### **PAYMENT PROTECTION**

100% payment protection for your covered amount.

## Wall-Mounted Digital Signage Display

UOM:MM



Model Size	15.6 inches	18.5 inches	21.5/22 inches	32 inches	43 inches	48/50 inches	55 inches	65 inches	75 inches	85/86 inches	100 inches	110 inches
Dimensions (mm)	376.4 × 236.4	443.4 × 267.4	509 × 306	751.4 × 445.9	992.2 × 580.4	1125.2 × 655.4	1261 × 731.8	1496.2 × 874.4	1718.39 × 997.16	1960 × 1133.62	2270.2 × 1306.2	2492 × 1424.3

## Floor-Standing Digital Signage Display

UOM :MM



Lirsen Tech offers wall-mounted and floor-standing displays from 32" to 110", ideal for retail, hospitality, corporate, and public spaces.

Brightness: 350 / 500 / 700 nits (indoor)

Systems: Android or Windows (i3/i5/i7 optional)

Memory: 1GB+8GB to 128GB

Customization: Housing, logo printing, accessories (camera, printer, scanner, etc.)

Flexible, reliable, and fully customizable — built to suit your project needs.

## Floor-Standing Touch Kiosk



Screen Size	Resolution	Brightness	Contrast Ratio	System Support
18.5"	1920 × 1080 (FHD)	300 nits	1000:1	Android / Windows
21.5"	1920 × 1080 (FHD)	300 nits	1000:1	Android / Windows
32"	1920 × 1080 (FHD)	350 nits	1200:1	Android / Windows
43"	1920 × 1080 (FHD)	350 nits	1200:1	Android / Windows
49"	1920 × 1080 (FHD)	350 nits	1200:1	Android / Windows
55"	1920 × 1080 (FHD)	350 nits	1200:1	Android / Windows
65"	3840 × 2160 (4K UHD)	400 nits	1200:1	Android / Windows

## Window Shop High Brightness Display Series



Size	32"	43"	49"	55"	65"	75"	86"
<b>Resolution</b>	1920 × 1080	1920 × 1080	1920 × 1080	1920 × 1080	3840 × 2160	3840 × 2160	3840 × 2160
<b>Brightness</b>	2500 cd/m²	2500 cd/m²	2500 cd/m²	2500 cd/m²	2500 cd/m²	2500 cd/m²	2500 cd/m²
<b>Contrast Ratio</b>	1200:1	1200:1	1200:1	1200:1	1200:1	1200:1	1200:1
<b>Viewing Angle</b>	178°/178°	178°/178°	178°/178°	178°/178°	178°/178°	178°/178°	178°/178°
<b>Surface Treatment</b>	Matte/Glossy	Matte/Glossy	Matte/Glossy	Matte/Glossy	Matte/Glossy	Matte/Glossy	Matte/Glossy
<b>Display Orientation</b>	H / V	H / V	H / V	H / V	H / V	H / V	H / V
<b>Max Power</b>	130W	170W	200W	280W	380W	420W	780W
<b>Product Size (mm)</b>	730 × 76 × 430	967 × 76 × 557	1003 × 76 × 634	1234 × 76 × 707	1454 × 76 × 829	1674 × 76 × 955	1928 × 76 × 1097
<b>Package Size (mm)</b>	860 × 230 × 560	1110 × 230 × 709	1250 × 230 × 780	1380 × 230 × 850	1600 × 230 × 970	1820 × 230 × 1100	2070 × 230 × 1200
<b>Operating Temp.</b>	-30 ~ 85°C						
<b>Humidity</b>	0%–95% RH, no condensation						

Single-sided:

CSF-S Ceiling Suspension with Frame | FSF-S Floor Stand with Frame | RS-S Rolling Stand | CSC-S Ceiling Suspension with Cables

Double-sided:

CSF-D Ceiling Suspension with Frame | FSF-D Floor Stand with Frame | RS-D Rolling Stand | CSC-D Ceiling Suspension with Cables

The suffix -S stands for Single-sided, and -D stands for Double-sided, making it easy to identify and categorize the models quickly. If you'd like to include the screen size or series number, you can format it like this:

CSF-D43 (43-inch double-sided ceiling suspension with frame) / FSF-S55 (55-inch single-sided floor stand with frame)



## LCD Full Screen Serious



### LCD Full Screen Series

This series features ultra-slim, borderless LCD digital signage designed for maximum visual impact. With sleek frameless edges and high-resolution displays, these units are ideal for retail, exhibitions, showrooms, and hospitality environments.

Frameless Full-Screen Design: Maximizes content visibility with a modern aesthetic

Portable Options Available: Equipped with rolling stands for easy relocation

Display Sizes: Available from 43" to 65" or customized upon request

System Support: Android or Windows (Intel i3/i5/i7)

Applications: Perfect for promotions, digital menus, product showcases, and brand storytelling

Modern, eye-catching, and built for performance — the LCD Full Screen Series delivers immersive engagement in any space.

Screen size	64 inch	69 inch	69.3 inch	79 inch
Display area	1509.12*569.06mm	1635.84*633.89mm	1649.66*617mm	1895*660mm
Resolution	3840*1448	3840*1488	3840*1436	3840*1337
OS system	Android OS Windows OS	Android OS Windows OS	Android OS Windows OS	Android OS Windows OS

## QSR Self-Service Kiosk Series

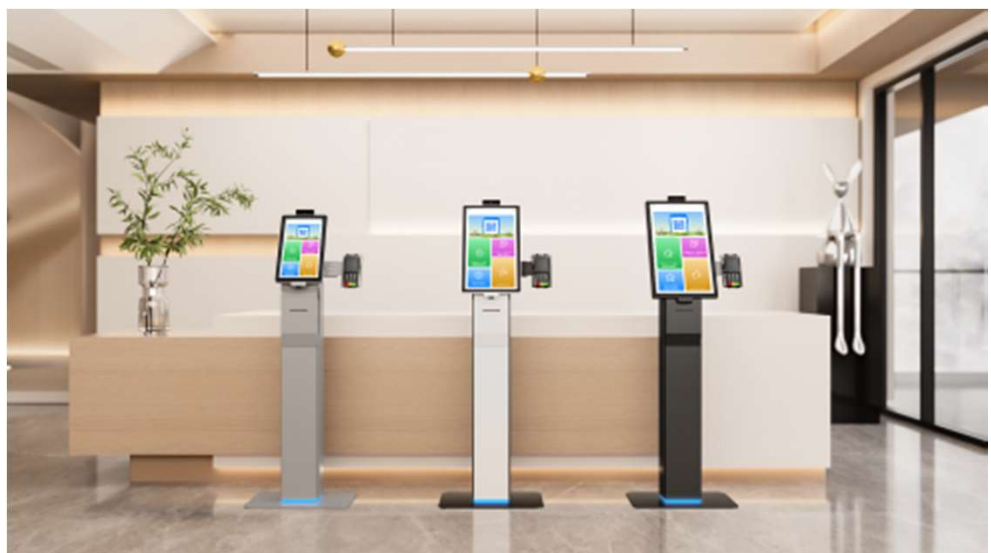


### QSR Self-Service Kiosk Series

Lirsan Tech's QSR Self-Service Kiosk Series is designed to enhance ordering efficiency and improve customer experience in fast food chains, cafés, and self-service restaurants. Available in 21.5-inch, 27-inch, and 32-inch screen sizes, this series includes floor-standing, wall-mounted, and countertop options to fit a wide range of space and operational needs.

Each unit supports Android or Windows systems and can be configured with optional components such as receipt printers, QR/barcode scanners, NFC payment modules, and cameras. With a clean, modular design and customizable housing, these kiosks are ideal for high-traffic environments that demand both reliability and visual appeal.

Whether for quick-service restaurants or self-check-in scenarios, this series helps streamline operations while reinforcing a modern, tech-forward brand image.



## Digital Menu Display for Restaurant Counter

### Versatile Digital Menu Display Set for Modern Beverage Shops

Enhance your store's branding and customer experience with this all-in-one digital menu display set. The set includes both a ceiling-mounted vertical screen and a desktop horizontal screen, delivering flexible installation options for counters, cashier areas, and behind-the-bar displays.

- Dual-Screen Setup: Includes 1x hanging portrait display and 1x tabletop landscape display
- Sizes Available: 21.5", 23.8", and 27"
- Vivid Menu: Perfect for fruit tea, milk tea, and smoothie shops
- High Visibility: Eye-catching illustrations and clean layout improve order efficiency
- Android OS Optional: Supports dynamic content updates, videos, or POS integration
- Customizable Content: Menu layout, language, and visuals can be tailored to your brand

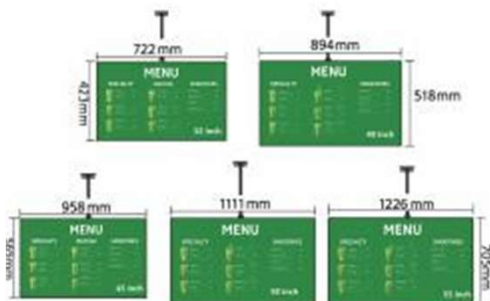
(supplied as a set)



21.5"

23.8"

27"



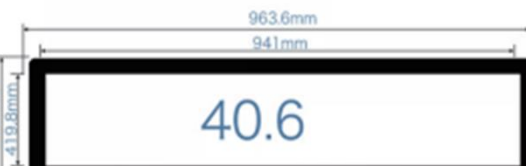
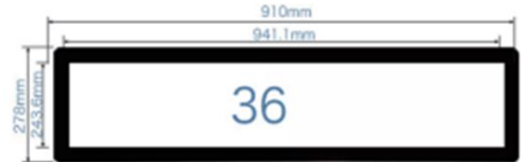
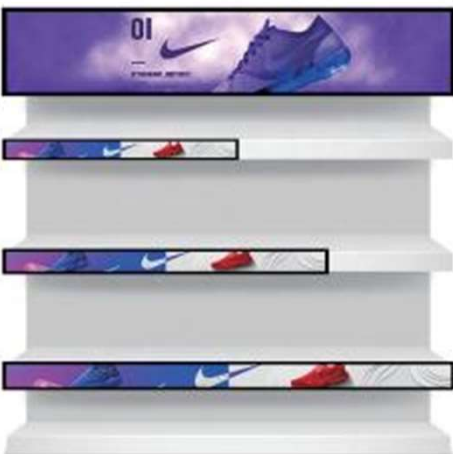
Size	Display Area (mm)	Overall Dimensions (mm)	Packing Dimensions (mm)	Resolution	Brightness	Voltage	Android System	Power Consumption
32"	712 × 411	722 × 423 × 81	795 × 515 × 130	1920 × 1080	300 cd/m <sup>2</sup>	100V-240V	64-bit Quad-Core, 2G+32G	≤48W
40"	878 × 485	894 × 518 × 81	995 × 610 × 150	1920 × 1080	300 cd/m <sup>2</sup>	100V-240V	64-bit Quad-Core, 2G+32G	≤75W
43"	953 × 543	956 × 565 × 82	1060 × 650 × 150	1920 × 1080	300 cd/m <sup>2</sup>	100V-240V	64-bit Quad-Core, 2G+32G	≤75W
50"	1107 × 628	1111 × 641 × 78	1200 × 755 × 180	1920 × 1080	300 cd/m <sup>2</sup>	100V-240V	64-bit Quad-Core, 2G+32G	≤85W
55"	1221 × 693	1226 × 705 × 78	1320 × 820 × 180	1920 × 1080	300 cd/m <sup>2</sup>	100V-240V	64-bit Quad-Core, 2G+32G	≤120W



## FEATURES:

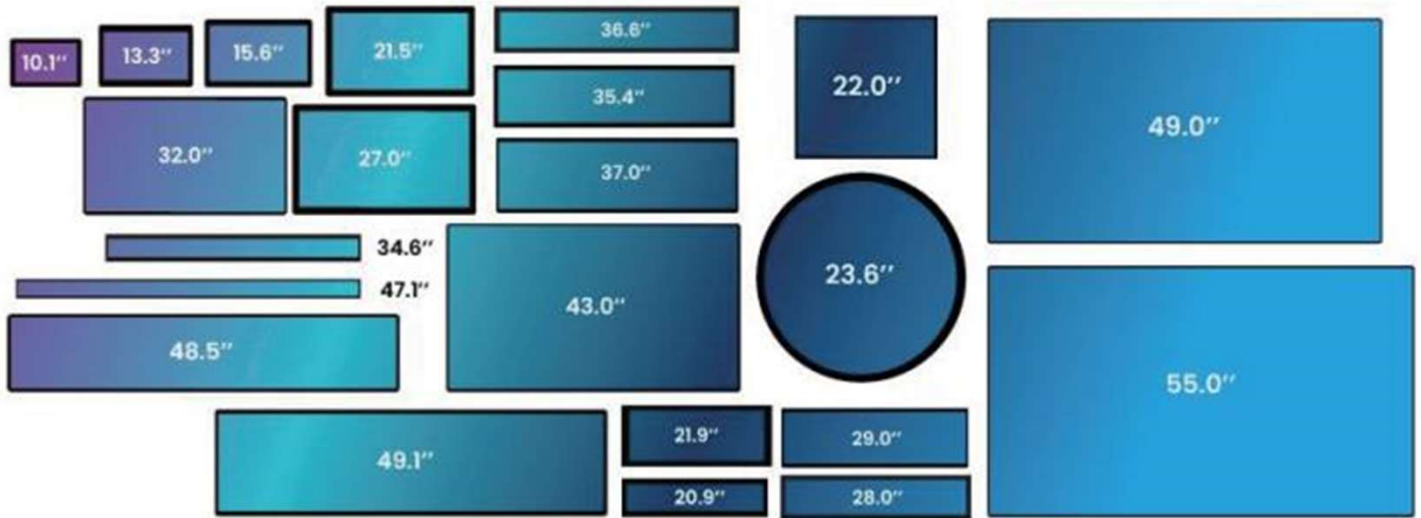
Shelf edge LCD display design for supermarket/retail shop shelf, replacement of the traditional paper display. It suits for 60cm, 90cm, 120cm different shelf size.

- High contrast, high brightness, greatly improving the layering of the picture, and better performance of details; Wide color range.
- Sync play or Play as a video wall.
- Shelf edge LCD display with narrow bezel, advertisements are displayed without blocking the sight of consumers, thus creating a perfect shopping experience
- Support WIFI, Mobile App. Optional Refee CMS software for content remote management.





## Special-Shaped LCD Displays & Custom Projects



### Square LCD Display



Android  
Support the Android application  
download and very convenient  
as same as smart phone



Windows  
Windows 7/8/10 all are optional  
Rest assured use



Size (inch)	19.2 inch	26 inch	29.6 inch	33.1 inch	39.4 inch	45.4 inch	51.6 inch
Resolution	950*950		1900*1900				1880*1880
System	Window and Android						
Technology	IPS, M+(RGBW)						
Life	50000 Hours						
Brightness	500 cd/m2						
Color	Black or other color if you want						
Proportion	0						
Temperature	10°C---50°C						
Humidity	10%---50%						
Visual angle	178/178						
Sound effect	2 * High efficiency fidelity 8 Ω 5W loudspeaker						
WiFi	802.11 b/g/n						
Thickness	60mm						
External dimension (mm)	379*379	501*501	565*565	632*632	741*741	849*849	968*968
Panel size(mm)	345*345	467*467	531*531	598*598	707*707	815*815	928*928

### Round LCD Display





#### Intelligent Interactive Conference Education All-in-one Kiosk



#### product configurations (only for reference)

Product Specification	55"	65"	75"	84"	98"
overall size	1274*747*60mm	1469*887*63mm	1767*1109*103mm	2030*1242*122mm	2325*1416*119mm
Display Area	1212*685mm	1430*804mm	1650*928mm	1873*1054mm	2160*1215mm
Max Resolution	1920*1080	1920*1080	3840*2160	3840*2160	3840*2160
power supply	220W	250W	300W	500W	550W
Net weight	45KG	5640KG	63KG	116KG	162KG
screen scale	16:9				
contrast Ratio	2000:1				
Voltage	100-240V				
Interface	UsB / HDMI / VGA				
Lifespan	50000hrs				
Brightness	500nits				
Material	Tempered Glass				
Touchscreen	IR Touchscreen Type				
installing Mode	Floor standing / Wall Mounted				

Artificial Design  
Metallic Appearance  
Free adjustable holder  
Moveable pulley

Dark grey color Aluminum Alloy frame combining with slim body, enhancing the metal texture



Metal case

Tempered Glass

strong 4mm thickness tempered glass, Mohs, 7th grade hardness with complete anti-scratched function



original conference Display Holder  
could also hang on the wall or inlay into wall  
Metallic material with strong bearing capacity, rational design

With camera on top

Various interfaces

Bottom with pulley

Free height adjustment

High volume sound system

object pallet





# Digital Signage & EV Charging Totems for smart cities

Governments around the world are beginning to understand the value of offering free Internet connection through free public Wi-Fi. This number is only expected to grow as the demand for free Wi-Fi access increases.

The Internet of Things and Smart Cities are driving wireless networks to become more important not only to end users of the service but to Councils who are implementing Smart City initiatives to drive their digital transformation. A smart city is a dynamic city that makes living in a dense urban environment more civil and rewarding. There are many benefits of having free city Wi-Fi, with the most notable being free internet access to citizens, tourists and visitors.



Indoor and Outdoor Digital Signage Totems are an efficient way to raise ad revenue for a city. They are ideal for way finding, accessing city services, finding local business information, showcasing digital art, informing about local history and entertainment. In addition, Outdoor totems maybe able to serve as a reverse alert system during emergencies. As part of a smart network, each totem will have content specific to its location and can dynamically change content based on the needs of the users. Smart platforms allow cloud-based digital signage applications to be centrally managed through a server across multiple placements and geographies. This is why digital signage Wifi totems are seen as a key component to the smart city infrastructure.



Interactive Design Cafe DOOH Outdoor Digital Signage Totems are known for our elegant designs, exceptional quality, and unbeatable performance. Our outdoor LCD digital signage totems are developed for use in open-space and sun exposed outdoor environments, delivering to customers truly reliable and robust structures. We are investigating and developing an entirely new array technologies as well integrating some existing ones that will raise the bar in digital signage, creating new value for the consumer and network owner. We develop both hardware and software for advertising agencies, brands, airports, shopping malls, governments, EV and smart city infrastructure in public and commercial spaces.



### The Brightest LCDs in the World

Lirsen ultra-high brightness LCDs with brightness ratings up to 5500 nits, can easily be viewed in direct sunlight, such as storefront windows or outdoor enclo-



### Brightness and Color Guarant-

All high brightness LCDs are guaranteed to produce a bright, vivid image with a brightness and color degradation of no more than 9% over 5 year of continuous use.



### Intelligent Thermal Manage- ment

Heat generated by the display is radiated away from high temperature areas while a sensor continuously monitors the internal temperature to protect the system from overheating. This is accomplished with ultra-quiet fans, or some models utilize a fanless thermal management system.



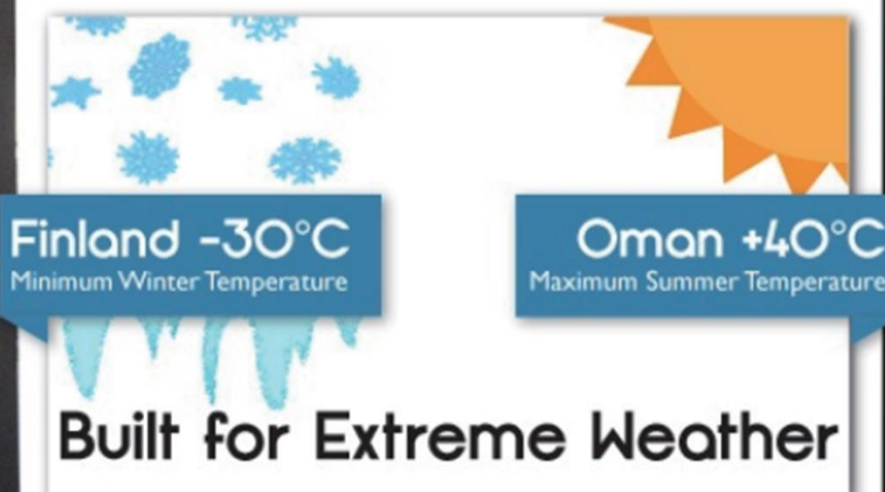
### Local Dimming Backlight

The display features a proprietary local dimming LED back light technique for a remarkably high contrast picture. With direct local dimming, darker areas of an image receive less backlighting than lighter areas.



### Low Power Consumption

With low watts/nits ratings, DynaScan offers some of the most power-efficient, lowest power-consuming professional LCDs in the industry.





## Drive-Thru Kiosk & Menu Board Solutions

### 55 inch Single Screen



#### Outdoor Digital Menu Board Series — Single, Dual & Triple Screen Options

Lirsan Tech's outdoor digital menu board series is designed for fast food chains, QSR drive-thrus, and service lane applications. Available in single-screen, dual-screen, and triple-screen configurations (all 55"), these high-brightness, weatherproof displays ensure clear visibility in all lighting conditions.

**Flexible Screen Configurations:** Choose from single, double, or triple 55-inch screens

**Outdoor Ready:** IP-rated waterproof structure with heat dissipation and anti-glare glass

**High Brightness:** Up to 2500 nits for daylight visibility

**System Support:** Android or Windows with CMS compatibility

**Customization Available:** Camera, speaker, scanner, logo printing, color, and housing design

**Ideal for modern drive-thru operations,** these displays streamline ordering and boost brand impact with a sleek, integrated design.

### Dual 55" Linked Outdoor Menu Board for QSR



### Triple 55" Linked Outdoor Digital Menu Board for Drive-Thru



## High Brightness IP65 Outdoor Wall-Mounted Digital Signage

### Product Overview

Our outdoor wall-mounted high brightness digital signage displays are designed for demanding commercial environments. Available in sizes from 32" to 98", they offer flexible configuration and customization to match various project needs.

### Customizable Housing:

Enclosure color, silk-screen logo, and structural design can be tailored to your brand or installation environment.

### System & Performance Options:

Android or Windows systems are available, with optional upgrades for RAM and storage capacity based on application requirements.

### Glass Options:

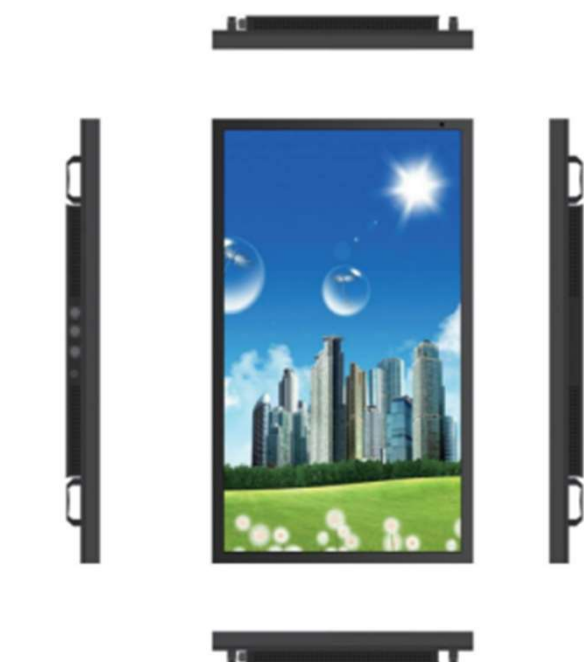
Equipped with durable 4mm tempered glass, supporting optional coatings such as AR (Anti-Reflection), AG (Anti-Glare), and AF (Anti-Fingerprint) for enhanced visibility and durability in outdoor conditions.

### Touch Support:

Optional PCAP touch functionality is available for interactive applications.

### Brightness Flexibility:

Standard brightness is 2000 nits, with customization available for



Screen Size	Resolution	Visible Area (mm)	Brightness	System	Touch	IP Rating	Glass	Cooling Method
32"	1920 × 1080	393.9 × 699.4	2000 nits	Android / Win	Optional	IP65	4mm Tempered Glass, IK 10, AG/AR/AF Optional	Fan or smart temperature control
43"	1920 × 1080	529.2 × 941.1	2000 nits	Android / Win	Optional	IP65	4mm Tempered Glass, IK 10, AG/AR/AF Optional	Fan or smart temperature control
49"	1920 × 1080	604 × 1074	2000 nits	Android / Win	Optional	IP65	4mm Tempered Glass, IK 10, AG/AR/AF Optional	Fan or smart temperature control
55"	1920 × 1080	684.4 × 1213.6	2000 nits	Android / Win	Optional	IP65	4mm Tempered Glass, IK 10, AG/AR/AF Optional	Fan or smart temperature control
65"	1920 × 1080	805.6 × 1430.5	2000 nits	Android / Win	Optional	IP65	4mm Tempered Glass, IK 10, AG/AR/AF Optional	Fan or smart temperature control
75"	3840 × 2160	934.8 × 1658.4 (est.)	2000 nits	Android / Win	Optional	IP65	4mm Tempered Glass, IK 10, AG/AR/AF Optional	Fan or smart temperature control
86"	3840 × 2160	1062 × 1887 (est.)	2000 nits	Android / Win	Optional	IP65	4mm Tempered Glass, IK 10, AG/AR/AF Optional	Fan or smart temperature control
98"	3840 × 2160	1210 × 2150 (est.)	2000 nits	Android / Win	Optional	IP65	4mm Tempered Glass, IK 10, AG/AR/AF Optional	Fan or smart temperature control

## High Brightness IP65 Outdoor Floor standing Digital Signage



### Outdoor Floorstanding Digital Signage Overview

Our IP65-rated floorstanding digital signage is built for 24/7 outdoor use, offering high brightness displays (2000–3000 nits) and durable weatherproof enclosures.

System: Android / Windows, customizable CPU, RAM, and storage

Touch: Optional touch

Brightness: Sunlight-readable, standard 2000 nits or higher

Glass: 4mm tempered, AG / AR / AF optional

Screen Size	Resolution	Visible Area (mm)	Brightness	System	Touch	IP Rating	Glass	Cooling Method
32"	1920 × 1080	393.9 × 699.4	2000 nits	Android / Win	Optional	IP65	4mm Tempered Glass, IK 10, AG/AR/AF Optional	Fan or smart temperature control
43"	1920 × 1080	529.2 × 941.1	2000 nits	Android / Win	Optional	IP65	4mm Tempered Glass, IK 10, AG/AR/AF Optional	Fan or smart temperature control
49"	1920 × 1080	604 × 1074	2000 nits	Android / Win	Optional	IP65	4mm Tempered Glass, IK 10, AG/AR/AF Optional	Fan or smart temperature control
55"	1920 × 1080	684.4 × 1213.6	2000 nits	Android / Win	Optional	IP65	4mm Tempered Glass, IK 10, AG/AR/AF Optional	Fan or smart temperature control
65"	1920 × 1080	805.6 × 1430.5	2000 nits	Android / Win	Optional	IP65	4mm Tempered Glass, IK 10, AG/AR/AF Optional	Fan or smart temperature control
75"	3840 × 2160	934.8 × 1658.4 (est.)	2000 nits	Android / Win	Optional	IP65	4mm Tempered Glass, IK 10, AG/AR/AF Optional	Fan or smart temperature control
86"	3840 × 2160	1062 × 1887 (est.)	2000 nits	Android / Win	Optional	IP65	4mm Tempered Glass, IK 10, AG/AR/AF Optional	Fan or smart temperature control
98"	3840 × 2160	1210 × 2150 (est.)	2000 nits	Android / Win	Optional	IP65	4mm Tempered Glass, IK 10, AG/AR/AF Optional	Fan or smart temperature control

## Battery-Powered Outdoor LCD Display | IP65 Waterproof Digital Signage



Parameter	32"	43"	55"
<b>Display Size</b>	697.8 × 392.2 mm (W × H)	943 × 531 mm (W × H)	1209.6 × 680.4 mm (W × H)
<b>Aspect Ratio</b>	16:9	16:9	16:9
<b>Backlight Type</b>	Patent LED backlight modular component + constant		
<b>Resolution</b>	1080 × 1920	1080 × 1920	1080 × 1920
<b>Color</b>	16.7M	16.7M	16.7M
<b>Luminance</b>	1800 cd/m <sup>2</sup> (meets strong direct sunlight environment)	2000 cd/m <sup>2</sup> (meets strong direct sunlight environment)	
<b>Contrast Ratio</b>	3500:1	3500:1	3500:1
<b>Viewing Angle</b>	178° (H) / 178° (V)	178° (H) / 178° (V)	178° (H) / 178° (V)
<b>Response Time</b>	5ms	5ms	5ms
<b>Color System</b>	PAL / NTSC / SECAM	PAL / NTSC / SECAM	PAL / NTSC / SECAM
<b>Life Span</b>	≥ 60,000 hours	≥ 60,000 hours	≥ 60,000 hours

## Battery-Powered Dual-Sided Outdoor Digital Signage



Dual-Sided LCD Display: Supports identical or independent content on both screens.

Outdoor Ready: IP-rated waterproof & dustproof, optional 4K resolution, dual 10W speakers, optional touchscreen, Wi-Fi & Bluetooth.

Durability: Anti-glare (AG) & 3mm industrial-grade protective glass.

High Brightness: 1800 nits with auto brightness adjustment.

Long Battery Life: 100,000mAh, up to 14 hours runtime.

Customization: Color & logo branding available.

Connectivity: Optional GPS tracking, 4G/5G support.

Performance: Android 11, RK3568 quad-core, ARM Cortex-A55, Mali-G52 GPU, 2GB RAM, 32GB storage.

Smart Features: Human presence detection, adaptive brightness.



## Project Case Study

